

# Secondary 1 Registration



CHIJ St. Theresa's Convent



CHIJ St Theresa's Convent

Simple in Virtue

Steadfast in Duty

# Programme Outline

Timing	Programme	Remarks
9am-9.35am	Welcome Remarks & Introduction to Key Theresian Experiences and Programmes	Mrs Jenny Leong Principal
9.35am-9.45am	Art & Music Elective Programmes (AEP/MEP)	Mdm Chin Pooi Pooi HOD Design & Food Studies
9.45am-9.55am	Mother Tongue & Foreign Language Matters	Mdm Lee Chai Yen HOD MT
9.55am-10.15am	Sec 1 Registration Procedures & Orientation	Ms Joyce Tan Sec 1 Year Head





# CHIJ St. Theresa's Convent



**Sec 1 Registration**  
**19 December 2024**  
**Principal – Mrs Jenny Leong**



CHIJ St Theresa's Convent

Simple in Virtue

Steadfast in Duty

# CHIJ St. Theresa's Convent



## PRINCIPAL'S WELCOME **Mrs Jenny Leong**



# CHIJ St. Theresa's Convent

## MISSION

To create a **Christ-centred school community** where all work together for the promotion of love, truth, justice and freedom, with special reference to the needs of persons who are disadvantaged in any way.

## VISION

We are a community of Leaders and Learners for God and for Others.

## SCHOOL VALUES

LOVE, TRUTH, JUSTICE, FREEDOM



# Milestones in our School's History

**1933**

Started by IJ nuns  
Urgent need to  
provide education for  
daughters of poor  
workers at Harbour,  
Railway & SGH

**1976**

Offered both  
primary &  
secondary classes



**2010**

PRIME  
approved;  
operated at  
Queensway  
Campus

**2013**

"80 years of  
Love & Light

**2016**

School  
Distinction  
Award

**2019**

165 years of  
IJ education



**1954**

Moved to Radin Mas  
Provided light to  
kampongs  
"Light on the Hill"

**2012**

PRIME completed;  
returned to Lower  
Delta Rd Campus



**2018**

85 years  
of Theresian Light

**2023**

90 years of  
Theresian Light

**2014**

Hockey & Sports: Learning for  
Life Programme (LLP)  
Education For Life: Applied  
Learning Programme (ALP)

**1992**

Became a full  
secondary school

**2024**

CHIJ 170<sup>th</sup>  
Anniversary



CHIJ St Theresa's Convent

Simple in Virtue

Steadfast in Duty



Every child will be developed holistically to realise her  
God-given talents and potential.

## Our Belief



Every Child is a gift who  
develops as a leader and  
learner for God and for others



## Our Promise



Every Theresian is  
A Light to Others





# OUR THERESIAN STUDENT PORTRAIT

A **resilient** and **self-directed** learner who demonstrates commitment to lifelong learning

An **adaptable** and **future** ready learner who demonstrates 21st century competencies



A leader who goes beyond self to **uplift** others, **particularly** the **disadvantaged**

A leader who strives for the **betterment of the** community and the nation

A lady who demonstrates  
**Love, Truth, Justice and Freedom**  
in words and deeds





# Vibrant STC School Life



House Practices @ Hockey Pitch



Catholic Activities @ Chapel



National Day Celebration @ Hall



After School Engagement @Lighthouse



CHIJ St Theresa's Convent

Simple in Virtue

Steadfast in Duty



# Vibrant STC School Life

Kayaking Programme



Green Gardening Programme



Green Bazaar 2024

Sec 1 CCA Trials



CHIJ St Theresa's Convent

Simple in Virtue

Steadfast in Duty



# Uniquely Theresian Programmes

## Education For Life (EFL) – STC's Flagship Programme

For the learning & development of 21<sup>st</sup> century skillsets through the curriculum (ALP) and co-curriculum activities (LLP).





# STC's Applied Learning Programme (ALP)

Explicit learning of Problem Solving, Research & Communication Skills through inter-disciplinary tasks

- Sec 1 – History, Geography, Science
- Sec 2 - Project Work (STEM, Sustainability)
- Sec 3 – Social Studies (Inclusive Society)

## Secondary 1 Applied Learning Programme

### Geographical Investigation

How clean are our waters?



# STC's Lifelong Learning Programme (LLP)



Developing Self-Directed, Confident and Resilient Leaders, Learners and Ladies through Sports and **HOCKEY!**



CHIJ St Theresa's Convent

Simple in Virtue

Steadfast in Duty



# Strong tradition of sporting excellence:



**2024 National 'B' Division Hockey Championships – 3<sup>rd</sup> Runner Up**  
**2024 National 'C' Division Hockey Championships – 3<sup>rd</sup> Runner Up**



CHIJ St Theresa's Convent

Simple in Virtue

Steadfast in Duty



# CHIJ St. Theresa's Convent



**STC Hockey Pitch, Netball Court ( New Sheltered Court)**



CHIJ St Theresa's Convent

Simple in Virtue

Steadfast in Duty



# Student Leadership Programme



Developing strong personal mastery, social-emotional competencies and social responsibility, STC aims to shape Theresians into **LEADERS** of good character



CHIJ St Theresa's Convent

Simple in Virtue

Steadfast in Duty



# Education and Career Guidance

Inspiring Theresians to discover their purpose and discern their calling in life, and make informed choices for their education and career pathways.

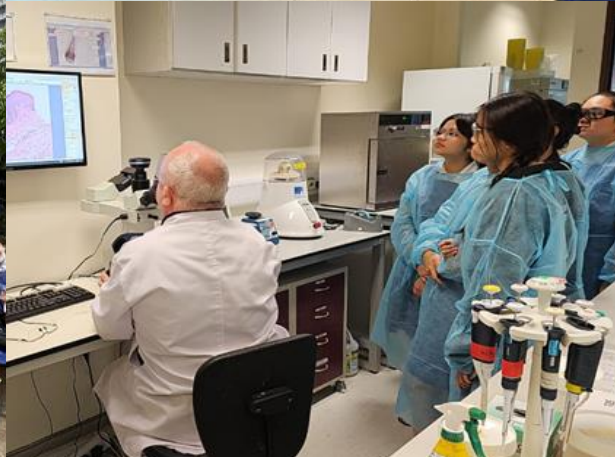
## Collaborations with Post-Secondary Educational Institutions, Alumni and Parents





# Education and Career Guidance

**Industry Learning Journeys and Tertiary Higher Learning**  
to understand the world beyond the school gates



CHIJ St Theresa's Convent

Simple in Virtue

Steadfast in Duty



# Values in Action

## Nurturing Theresians to be Persons for God and for Others



CHIJ St Theresa's Convent

Simple in Virtue

Steadfast in Duty



# Blended Learning with PDLP



- Enhanced Learning of Science
- Self-Directed & Collaborative Learning
- Development of Digital Literacies





## Start of S1

Full SBB

**All students offer the following subjects in lower secondary:**

English Language (EL)	Students' Posting Groups will guide the initial subject levels students offer at the start of S1.
Mother Tongue Language (MTL)	
Mathematics (MA)	
Science (SCI)	
Humanities (HUM)	
Art	Common Curriculum Subjects
Design & Technology (D&T)	
Food & Consumer Education (FCE)	
Music	
Physical Education (PE)	
Character & Citizenship Education (CCE)	

**Offering Subjects at More Demanding Level (MDL)**

Eligible students can offer EL, MTL, MA and SCI at MDL based on their PSLE Achievement Level (AL) for each of these subjects.

Indicative Level of Most Subjects at Start of S1	PSLE Standard Grade	PSLE Foundation Grade	Option to offer subject at
G1	AL 5 or better	-	G3 / G2
	AL 6	ALA	G2
G2	AL 5 or better	-	G3

## End of S1

**Students will progress to S2 and offer subjects at existing subject levels.**

**Students who have done well may offer subjects at MDL in S2, based on school's holistic considerations.**



# Quotes from Our Secondary 1 2024 students

**Elena Chua (G2) from River Valley Primary**

*“When I first came to STC, I was a bit shy & quiet since I didn’t come from a CHIJ school and didn’t know anyone. But as I got to know my classmates, their hobbies and talents, I made new friends. After a few weeks, I felt much more energetic and happier because everyone was so kind & friendly. Overall, I’m glad to be at STC. There are so many activities that teach me how to become a better version of myself and help others in need, all while having fun.”*

**Nur Qistina Aizan Binte Mohamed Jamilie (G3) from CHIJ OLQP**

*When I first came to STC, I felt lonely in the unfamiliar environment I had to adapt to. However, I soon made new friends with people from different backgrounds. I've grown into an inclusive person. Thank you for making me feel welcome in my first year at STC.*

**Celeste Ang Ke Ting (G1) from CHIJ Kellock**

*As I entered the gates of STC, I felt anxious and nervous, unsure if I would fit in. But as I got used to the environment, I made many new friends & learnt new things. I like the friendly seniors and the classmates from different schools here.*





# Quotes from Our Secondary 1 2024 students

## **Rainie Chan (G2) from Clementi Primary**

*"What I appreciate most about STC is the supportive learning environment, calm and welcoming atmosphere. I also value the variety of activities offered, from the IFD Carnival to learning new skills at the Lighthouse. The biggest difference for me has been adjusting to a new environment with many students and teachers I didn't know. Coming from a co-ed school, I noticed changes in how friendships are formed. I was able to adapt quickly with the support of my teachers & friends. Their encouragement has helped me to cope with the transition and all the new experiences."*

## **Eng Kyng Hyee (G3) Rulang Primary**

*"In my first few months in STC, it was rather hard for me to adapt to the new environment. It was very different from primary school, but eventually I made it through with the support of my teachers, schoolmates and the friends I made along the way. I am so grateful to STC for teaching me to have an open heart for things I'm unfamiliar with and that I am so grateful for"*

## **Caitlyn Yenwen Milijevic (G3) from Raffles Girls Primary**

*"My first year at STC was truly enriching, thanks to the strong school spirit and supportive community. The biggest difference I noticed compared to primary school was the focus on character development and leadership, which helped shape us into confident individuals. Thank you for your guidance throughout my first year at STC."*



# CHIJ St. Theresa's Convent



Our students are the captains of their own boats,  
we are the lighthouse guiding them to find their way, their strengths and their  
skills through their secondary school years.



CHIJ St Theresa's Convent

Simple in Virtue

Steadfast in Duty



# Naming of Sec 1 FSBB Classes in STC

- In line with our school's core identity as a Catholic mission school & Christ-centred community
  - The Catholic saints as role models for our students in their growth to become women of distinction by striving to live out our school motto, 'Simple in virtue, steadfast in duty'
- **Sec 1 St. Anne (1A)**
  - **Sec 1 St. Bernardette (1B)**
  - **Sec 1 St. Clare (1C)**
  - **Sec 1 St. Deirdre (1D)**
  - **Sec 1 St. Elizabeth Ann Seton (1E)**
  - **Sec 1 St. Faustina (1F)**
  - **Sec 1 St. Gemma (1G)**

*\* Parents and students will be informed via PG about their allocated classes.*



# Secondary 1 Level Team

Class	Form Teachers
<b>1 St. Anne (1A)</b>	Mr Ngiam Xing Hao Ms Kasthuri D/O Mahanthran
<b>1 St. Bernadette (1B)</b>	Mr Sekaran S/O Govanden Ms Ho Yeng Yeng
<b>1 St. Clare (1C)</b>	Mr Pek Aik Soon Ms Quek Ygee Leng
<b>1 St. Deirdre (1D)</b>	Mr Natarajan Saravanan Ms Shirley Sim
<b>1 St. Elizabeth (1E)</b>	Mrs Clara Ang Ms Foo Lee Wee
<b>1 St. Faustina (1F)</b>	Mrs Amutha Elangovan Mr Timothy Chow
<b>1 St. Gemma (1G)</b>	Mr Lim Choon Hong Ms Eunice Hung





# CHIJ St. Theresa's Convent

## 2025 Sec 1 Level KPs

<b>Level Advisor</b>	Ms Janice Wee [Vice-Principal]
<b>Year Head (YH)</b>	Ms Joyce Tan
<b>Level KP</b>	Mdm Chin Pooi Pooi (HOD/Design & Food Studies and Aesthetics) Mr Leslie Francis (HOD/Student Well-Being and Management) Ms Tan Siew Hui (HOD English)



# Contacts of KPs & Care Team

Name of KP	Email Address
Ms Joyce Tan	tan_shu_min_joyce@moe.edu.sg
Ms Chin Pooi Pooi	chin_pooi_pooi@moe.edu.sg
Ms Tan Siew Hui	tan_siew_hui@schools.gov.sg
Mr Leslie Francis	munipas_leslie_francis@moe.edu.sg

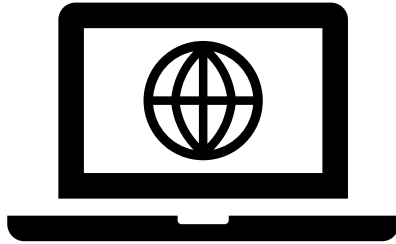
Name of School Counsellor (SC)/ SEN Officers/ Student Welfare Officer	Email Address
Ms Karene Teo (SC)	karene_teo_wei_fang@moe.edu.sg
Mdm Lisa Yoanna Astan (SEN Officer)*	astan_lisa_yoanna@moe.edu.sg
Mrs Cindy Ho (SEN Officer)*	cindy_cheong@moe.edu.sg
Ms Chua Wen Hui (SWO)	chua_boon_wai@moe.edu.sg

*\*To support students who need learning and behavioural support (eg. Autistic Spectrum Disorder/ Dyslexia/ other Learning Needs)*





# If you want to find out more:



Visit our school website:

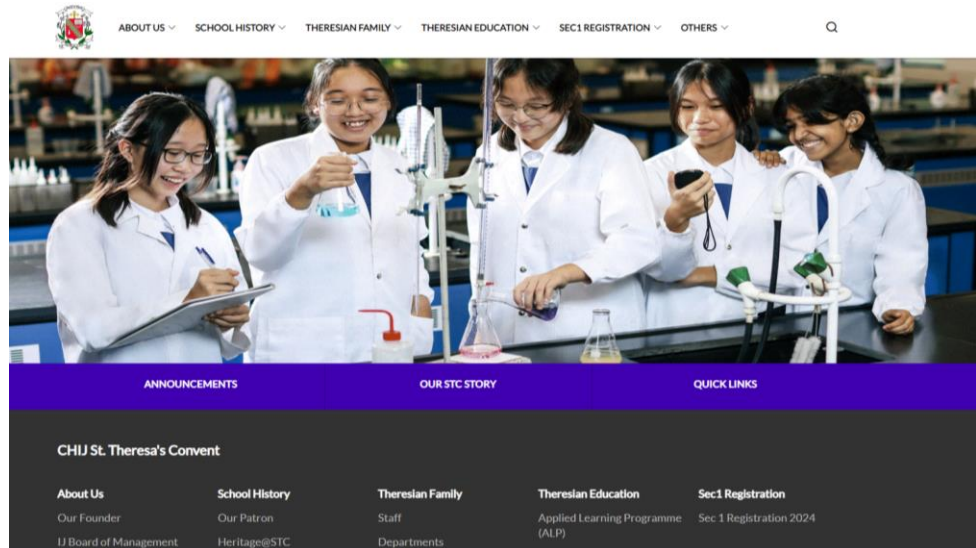
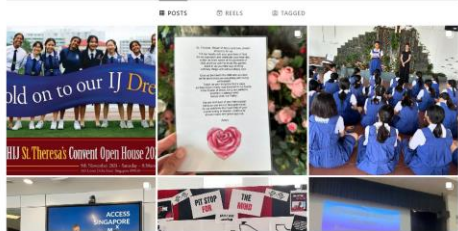
**[www.chijsttheresasconvent.moe.edu.sg](http://www.chijsttheresasconvent.moe.edu.sg)**



chijstc.sg Follow  
551 posts 3,735 followers 10 following  
CHIJ St Theresa's Convent  
150 Lower Delta Road  
Singapore 089155  
www.chijsttheresasconvent.moe.edu.sg



Central EXCO



Follow us on IG for more updates:

**[@chijstc.sg](https://www.instagram.com/chijstc.sg)**



**CHIJ St Theresa's Convent**

Simple in Virtue

Steadfast in Duty

# CHIJ St. Theresa's Convent



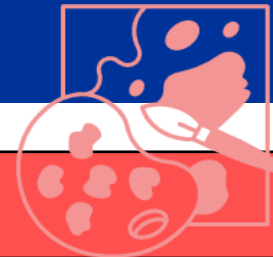
## Art & Music Elective Programmes (AEP/MEP)

Mdm Chin Pooi Pooi (chin\_pooi\_pooi@moe.edu.sg)





# Art Elective Programme



	<b>AEP</b>
<b>Programme Aims</b>	To develop students with interest, potential, and passion to pursue an in-depth study of art and design.
<b>Programme Duration</b>	4 Years Secondary 1 – 4
<b>Enrolment Period</b>	Beginning of Sec 1
<b>How AEP affects other Subjects</b>	Takes AEP instead of D&T and FCE in lower secondary, hence not eligible for D&T and F&N at upper secondary
<b>Subject Offered</b>	G3 / O-Level Higher Art
<b>Centre-Based Learning</b>	AEP Centre at National Junior College



# Music Elective Programme



	MEP
<b>Programme Aims</b>	To develop students with interest, potential, and passion to pursue an in-depth study of music.
<b>Programme Duration</b>	4 Years (Secondary 1 – 4)
<b>Enrolment Period</b>	Beginning of Sec 1
<b>How MEP affects other Subjects</b>	Takes MEP instead of D&T and FCE in lower secondary, hence not eligible for D&T and F&N at upper secondary
<b>Subjects offered</b>	G3 Higher Music
<b>Centre-Based Learning</b>	Anglo-Chinese School (Independent), Dunman High School





# Application for AEP and MEP

- Students from all courses are eligible to apply for AEP & MEP.
- Application is through secondary school at the start of the school term.
- There will be a briefing for the students by HOD Aesthetics on the online application on the first day of school.
- Interested students for **AEP** must pass the selection exercise conducted by AEB MOE. The selection exercise involves review of student's art portfolio and an interview of art tasks.
- Selection exercise for **MEP** required students to have some experience and competency in instrumental performance or singing, listening and evaluating music.
- **Timeline for submission of application: 2 - 15 January 2025**



# Application for AEP and MEO

Visit the following websites for application details and more information.

<https://moe.gov.sg/aep>

<https://moe.gov.sg/mep>







## Mother Tongue & Foreign Language Matters

Mdm Lee Chai Yen (lee\_chai\_yen@moe.edu.sg)



# Eligibility Criteria to offer HMTL

- Students with a PSLE Score of **8 or better** and offer MTL at PSLE
- Students with a PSLE Score of **9 – 14** and who have obtained **AL1 / AL2 in MTL or Distinction / Merit in HMTL**





# Higher Mother Tongue (HMT)

- Students who are offered **Higher Mother Tongue (HMT)** by MOE (based on PSLE results) will be given an **Eligibility Letter**.
- Please respond to the **acceptance of offer** for HMT via PG by **26 Dec 2024**.

Higher Chinese (HCL)	Conducted in school
Higher Malay (HML)	Bukit Panjang Govt High School
Higher Tamil (HTL)	UPTLC



# Eligibility Criteria to offer HMTL

- Students who missed the eligibility criteria based on PSLE results will be given an opportunity to try again for HMTL eligibility via **Secondary 1 End-Of-Year examination**.
- Students **MUST** score **75%** and higher in MTL End-Of-Year Examination.



# Third Languages

- Eligible students who have applied for 3rd Language would have been informed if their applications are successful / unsuccessful.
- 3rd Languages include Chinese (Special Programme), Malay (Special Programme), Bahasa Indonesia, Arabic, French, German, Japanese and Spanish.
- 3rd Languages lessons are conducted **outside curriculum hours.**





# Registration Details for Third Languages

- Students who have been assigned M(SP) / C(SP) zonal centres must **register online** at the respective zonal centre websites to accept the offer.
- Students who have been offered a Foreign Language (FL) must register with MOELC to accept the offer.



# Registration Details for Third Languages

Date of Registration	19 Dec 2024 to 2 Jan 2025
Venue	<b>M(SP) @ Zhonghua Secondary School:</b> 13 Serangoon Avenue 3 S(556123) <b>C(SP) @ MOELC Newton Campus:</b> 136 Cairnhill Road S(229722) <b>BAHASA INDONESIA @ MOELC Bishan Campus:</b> 11 Bishan Street 14 S(579782)

Students will have to **register online** with the respective centres:  
MOE Language Centre (MOELC) or Zonal Centres.

For MOE Language Centre, please go to the MOE LC website ([moelc.moe.edu.sg](http://moelc.moe.edu.sg)) to confirm the acceptance of the offer and complete the online registration.

For Zonal Centres, please refer to the websites of the respective Zonal Centre for registration instructions.



# Non-Tamil Languages (NTIL)

Please note that the Non-Tamil Languages (NTIL) lessons are not conducted in CHIJ St. Theresa's Convent.

Students who are taking NTIL will go to designated schools for their lessons.

For more information on NTIL matters, please refer to Board for the Teaching and Testing of South Asian Languages.

(<http://www.bttsal.com>)

For questions related to Mother Tongue Languages, please approach HOD/MTL Mdm Lee ([lee\\_chai\\_yen@moe.edu.sg](mailto:lee_chai_yen@moe.edu.sg))







## Sec 1 Registration Procedures & Orientation



# Sec 1 Online Registration Form

Please access FormSG to complete the registration process.

<https://go.gov.sg/sec1reg2025>



<https://go.gov.sg/sec1reg2025>

Alternatively, you can log in to Parents Gateway app to complete the registration.



# Appeal/ Transfer

For appeal for transfer based on serious medical conditions, please refer to the MOE website:

<https://www.moe.gov.sg/secondary/s1-posting/results/appeal-for-school-transfer>





# School Uniforms, PE Attire & Textbooks

Purchase can be done via an **online order** (to opt for either home delivery or self-collection in school) or **non-online order** (to order and self-collect in school).

School Uniform & PE Attire	School Bookshop
<b>KH Uniform Pte Ltd</b> <b>Website: <a href="https://khuniform.com/">https://khuniform.com/</a></b>  115A Commonwealth Drive #04-15/16 Tanglin Halt Industrial Estate Singapore 149596 Tel: 6479 6811 Fax: 6474 4037 Email: <a href="mailto:sales@khuniform.com">sales@khuniform.com</a>	<b>Pacific Bookstores Pte Ltd</b> <b>Website: <a href="https://www.pacificbookstores.com">https://www.pacificbookstores.com</a></b>  4 Arumugam Road #08-01 LTC Building C Singapore 409959 Tel (Main Office): 64640111 Tel (School): 90482460 (WhatsApp during operating hours only) Fax (Main Office): 64640110 E-mail: <a href="mailto:sales@pacificbookstores.com">sales@pacificbookstores.com</a>
May opt for home delivery OR self-collection (school canteen)	



# School Uniforms, PE Attire & Textbooks

E-appointments are required for self-collection in school

<https://www.picktime.com/stc2024>

## Order/self-collection at school canteen

Dates	Time
18 Dec	10.00am – 4.00pm
19, 20, 23, 26, 27 Dec	9.00am – 4.00pm



- Each customer will receive a confirmation email with the appointment time. Please keep to your timing and show your confirmation email at the Security Guard House (main gate).
- You need only make one e-appointment if you decide on non-online order for the purchase of uniform, textbooks and stationery.
- Sec 1 students may wear their *primary school attire* (including PE attire for PE lessons) during the first two weeks of Term 1, to allow more time for changeover to STC attire.



# Financial Assistance Scheme (FAS)

- If your child has received approval for MOE FAS in her primary school, please submit the primary school's approval letter to the General Office to collect the letter for redemption of books and uniform.
- For new applications, please download the MOE FAS application forms from the school website.
- **All applications and supporting documents must be submitted to the General Office by Friday, 3 January 2025.**
- Call General Office (6477 5777) for further enquiries.



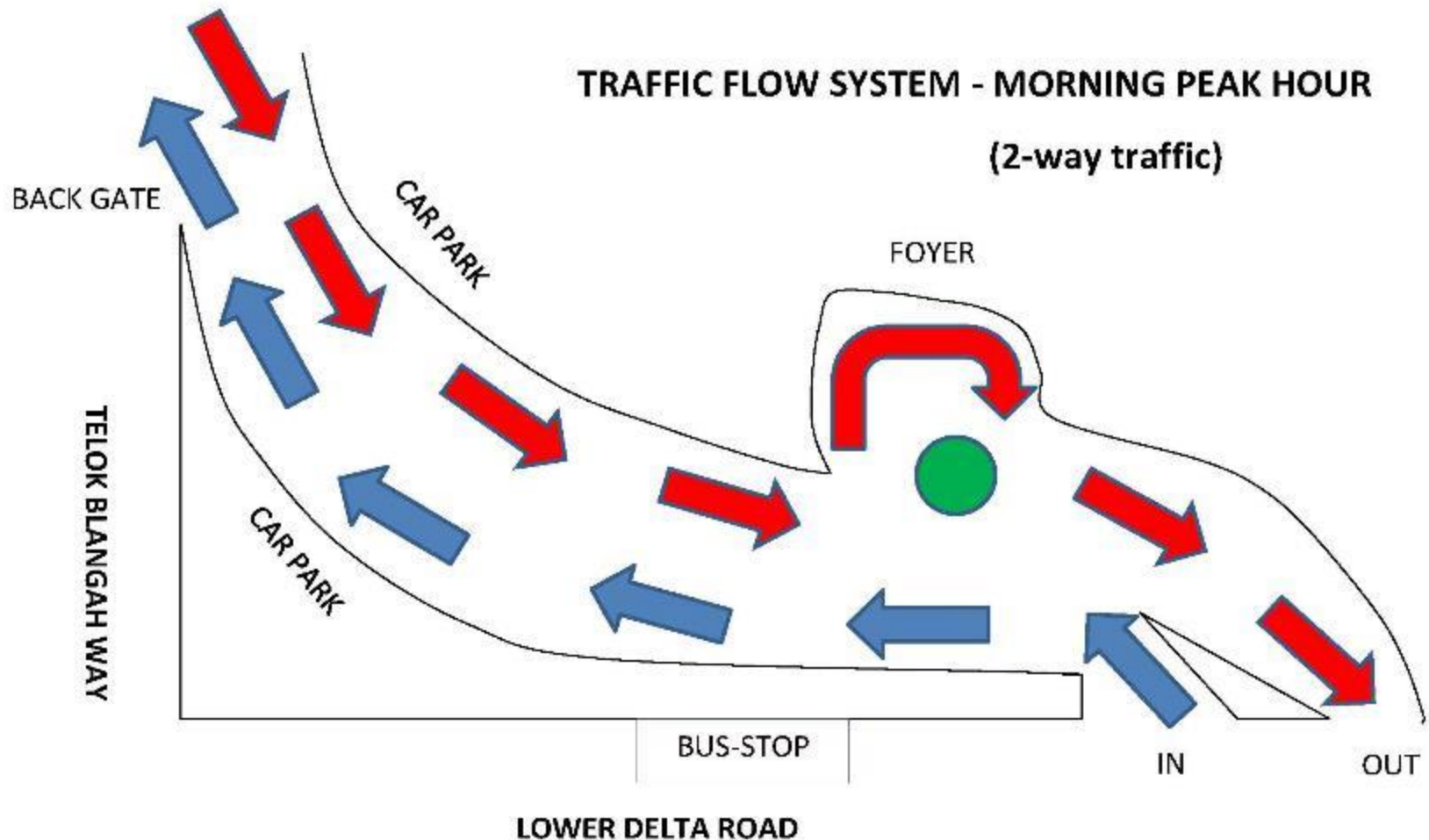


# Bus Concession Pass

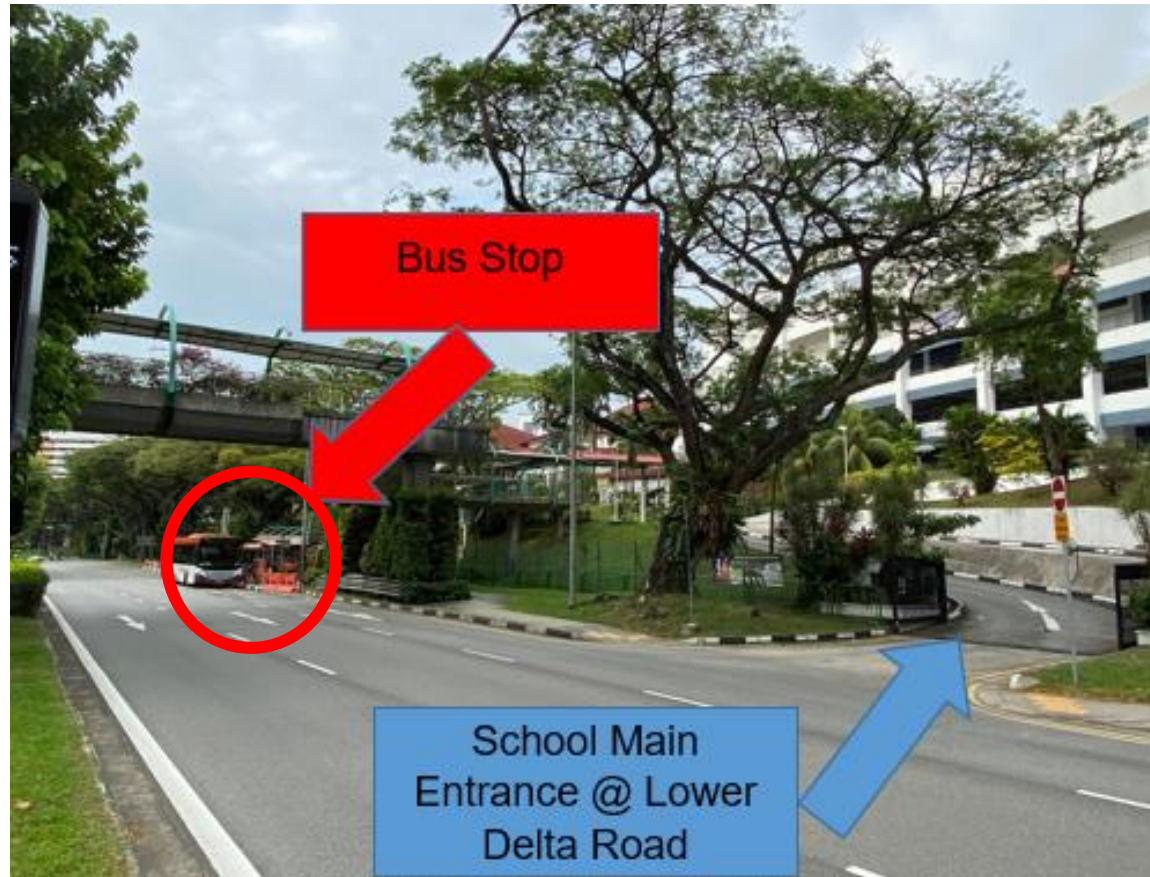
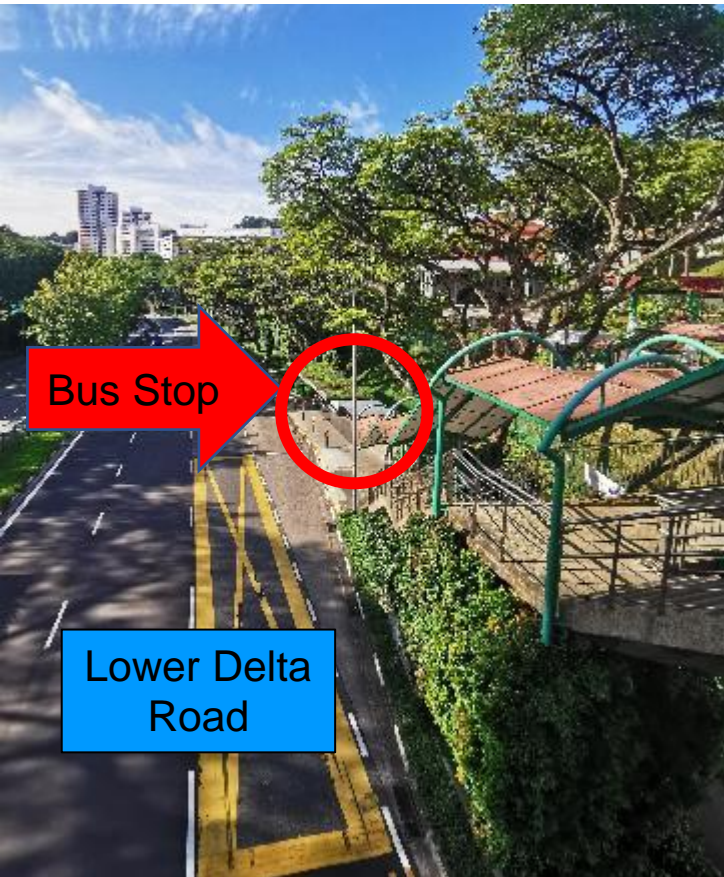
- All Students entering Secondary One in Jan 2025 will be issued with a new Secondary level **School Smart Card (SSC)**.
- Students can continue to **use Primary SSC for concessionary travel till end Apr 2025** while waiting for the Secondary SSC to be ready.
- You can purchase the **Bus Concession Pass (BCP)** using your Primary SSC but need to purchase the BCP for **Secondary School**.



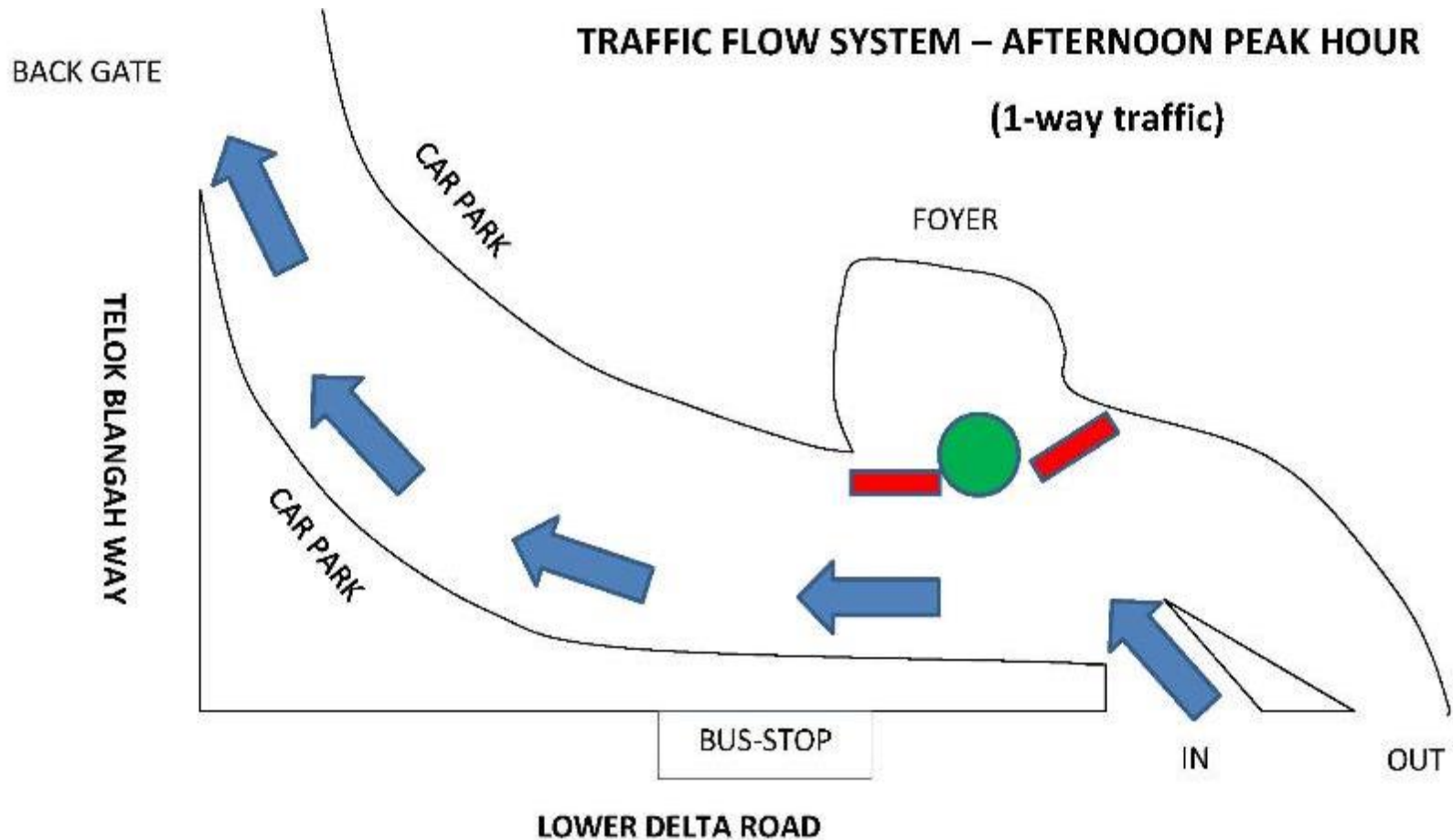
# Morning Peak Traffic



# Morning Peak Traffic (Safety First)



# Afternoon Peak Traffic





# Private Bus Transport

- Parents may consider contacting these vendors on your own to make your own private arrangements for transport services.

<b>Bus Transport Services The Apple Green</b> <i>(Bukit Panjang)</i>	<b>Teng Fei Transport services</b> <i>(Bukit Batok, Choa Chu Kang, Jurong East/Jurong West, Hillview, Clementi)</i>
Mr Goh, H/P: 9088 1611	Ms Serene, H/P: 9126 5048 Mr Tan, H/P: 97896911



# First Day of School : 2 Jan 2025

## First Day of School

**2 January 2025 (Thursday)**

## Reporting time

**7.20 am** in the AVA Room (Level 4)

**Attire:** **IJ Blue (Blue pinafore & white blouse)**  
(STC/ Pri sch uniform\*)

\*Sec 1 students may wear their primary school attire (including PE attire for PE lessons) for the first two weeks of Term 1, to allow more time for the changeover to STC attire. Likewise for students pending appeal to another school.



## Things to bring:

- Writing materials
- Water bottle (topped up at water coolers)
- **PE attire or primary school PE attire**
- A story book
- \$3 for recess at the canteen (\$4 including drink)



# Sec 1 Orientation

- Compulsory for all Sec 1 students
- To help **induct new Sec 1 students and manage the exciting transition** from primary to secondary school
  - Routines of secondary school life in STC
- Planned structured activities for the Form Teachers (FTs) and students to **develop students' socio-emotional competencies and help everyone bond and socialise**





# Sec 1 Orientation

- Three-day orientation programme in school:

Date	2 Jan (Thurs)	3 Jan (Fri)	6 Jan (Mon)
Reporting Time	7.20am	7.30am	7.30am
Dismissal Time	4.30pm	6.45pm	4.30pm

## **Reminder to parents/guardian:**

Please indicate your child's medical history in the Sec 1 Registration Form. Inform FTs too anytime during the orientation or the year if your child has any serious health condition that we need to take note of.

- 6 Jan 2025 (Mon): CCA Fair in school, dismissal at 4.30pm (more details will be shared in YH letter later)



# Sec 1 Info Night Session

- **All parents/guardians are cordially invited to the Info Night Session.**

**Date:** 3 Jan 2025, Friday (School Hall, Level 4)

**Time:** 4.30pm – 6.30pm

- Please take note of the date. Further details will be sent in Term 1 Week 0, together with the YH Termly Letter.



# Thank you and God bless you!



CHIJ St Theresa's Convent

Simple in Virtue

Steadfast in Duty